

Door stops, holders and silencers

Floor stops and holders

FS439

Universal dome floor stop

- High or low-rise mount
- Spring-loaded rubber contact
- Packed with fasteners for light duty masonry and wood applications
- Grey rubber bumper

Specifications

Material substrate	Made from cast zinc or stainless steel
Certifications	Meets ANSI/BHMA A156.16

Dimensions

Overall height	Pad height	Base height	Base diameter
1 1/2"	1 1/8"	1/4"	1 7/8"

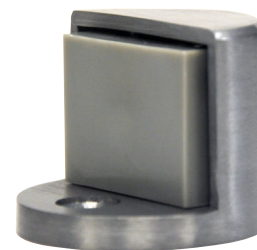
Finishes - zinc

BHMA	Description	Substrate	Finish
676	Matte Black	Zinc	BLK
677	Bright Brass	Zinc	US3
678	Satin Brass	Zinc	US4
704	Oil Rubbed Bronze	Zinc	US10B
–	Satin Nickel	Zinc	US15
681	Bright Chrome	Zinc	US26
682	Satin Chrome	Zinc	US26D
–	Aged Bronze	Zinc	643e/716

Finish - stainless steel

BHMA	Description	Substrate	Finish
630	Satin Stainless	Stainless steel	US32D

For other colors, consult factory.



FS410

Decorative floor stop

- Non-directional
- Packed with fasteners for light duty masonry and wood applications.
- Black rubber ring

Specifications

Material substrate	Made from cast brass
Certifications	Meets ANSI/BHMA A156.16

Dimensions

Overall height	Base height	Base diameter
1 1/2"	1/4"	1 1/4"

Finishes - zinc

BHMA	Description	Substrate	Finish
605	Bright Brass	Brass	US3
619	Satin Nickel	Brass	US15
622	Matte Black	Brass	BLK
625	Bright Chrome	Brass	US26
626	Satin Chrome	Brass	US26D
–	Aged Bronze	Brass	643e/716

